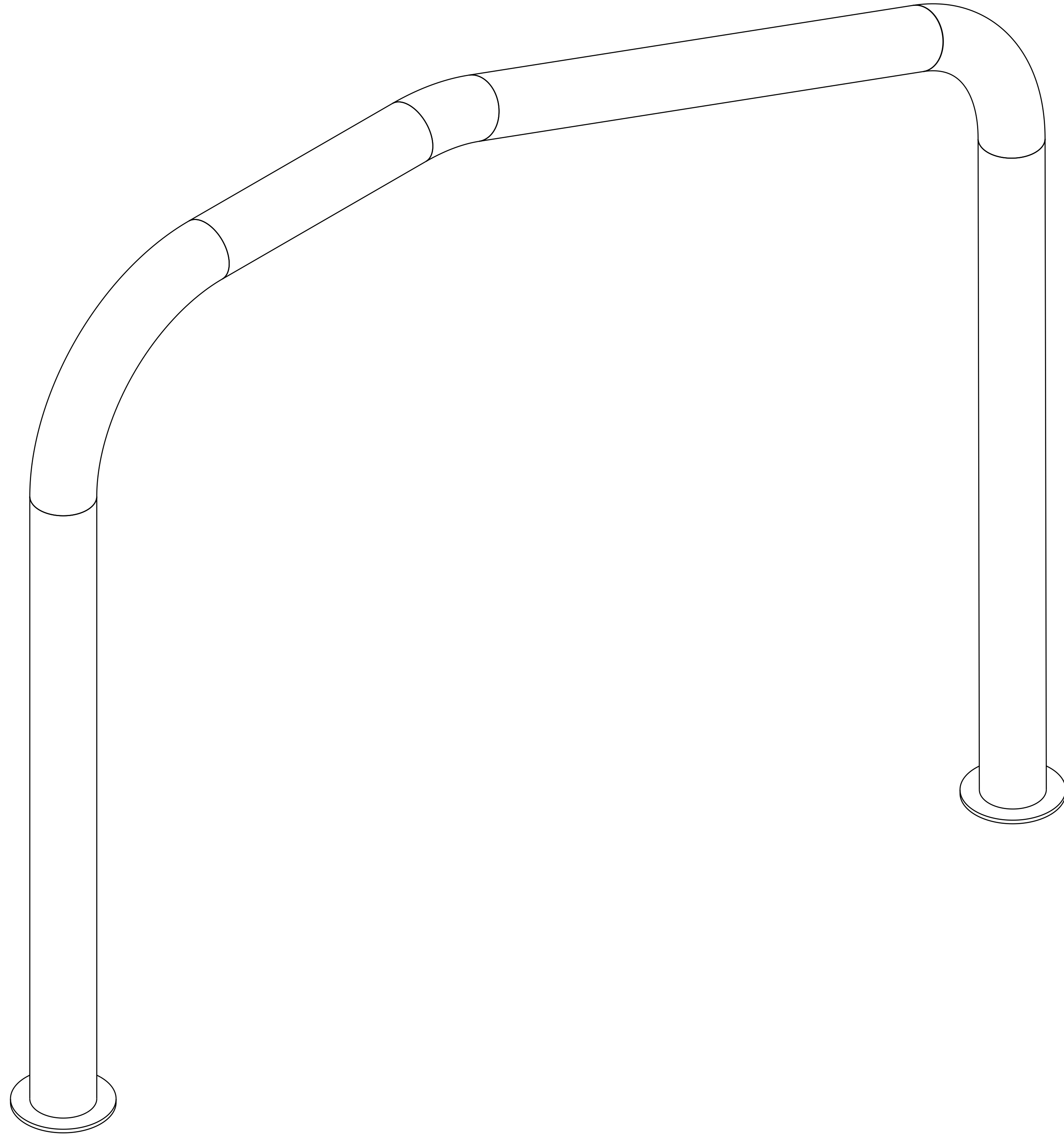
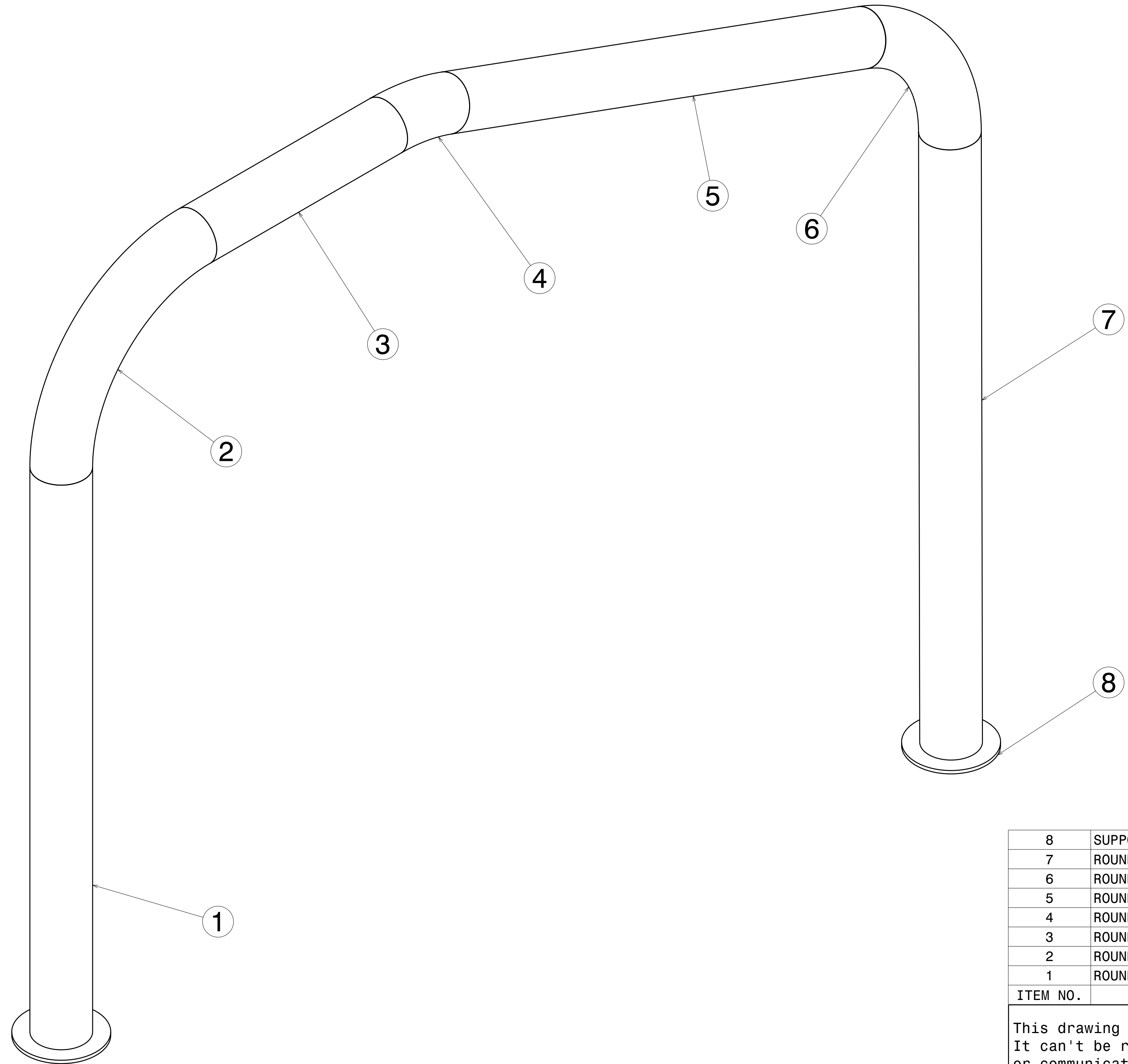


REV	DATE	DESCRIPTION
00	30MAR2020	INITIAL REVISION


- NOTES:
- (⊥) ALL VERTICAL SUPPORTS ARE PERPENDICULAR.
 - FLATNESS OF .5MM IS APPLIED BY DEFAULT.
 - ⊲ WELD BEAD OF 2MM RADIUS IS FOLLOWED.
 - ▽ SURFACE FINISH MEDIUM TO SMOOTH IS USED.
 - ALL TUBES ARE AS PER APL APOLLO STANDARD. CHANGES MAY EFFECT THE LOAD CAPACITY.
 - ALL HORIZONTAL AND VERTICAL TUBES ARE PERPENDICULAR TO EACH OTHER WITH ±1 DEG.
 - FINE WELDING IS REQUIRED AS PER MENTIONED DETAILS AND FINISHING.
 - HIGHER CURRENT WELDING MAY AFFECT THE BRITTLENESS OF MATERIAL WHICH LATER MAY RAISE TO WEAKENING OF STRUCTURE.
 - FABRICATORS ARE ALLOWED TO USE FITTINGS/FRAMES/SUPPORTS AS NEEDED AND THE SAME MUST BE COMMUNICATED BACK TO ENGINEERING TEAM.
 - LENGTH OF ALL LONGITUDINAL FRAMES ARE FOR REFERENCE ONLY AND SUBJECTED TO CHANGE PER REQUIREMENT.



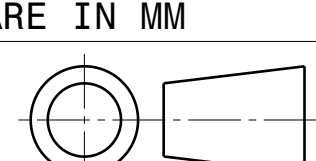
ISOMETRIC VIEW



ITEM NO.	PART NUMBER	DESCRIPTION	QTY.	Wt(Kg)/Each
8	SUPPORT BOP 1	25 X 25 X 1.6 X 102	4	0.5
7	ROUND TUBE 135-7	DIA 76.1 X 4.05 THK X 907	2	6.5
6	ROUND TUBE 135-6	DIA 76.1 X 4.05 THK X AS REQUIRED	2	2.02
5	ROUND TUBE 135-5	DIA 76.1 X 4.05 THK X 760	2	5.5
4	ROUND TUBE 135-4	DIA 76.1 X 4.05 THK X AS REQUIRED	2	0.8
3	ROUND TUBE 135-3	DIA 76.1 X 4.05 THK X 327.3	2	2.4
2	ROUND TUBE 135-2	DIA 76.1 X 4.05 THK X AS REQUIRED	2	2.6
1	ROUND TUBE 135-1	DIA 76.1 X 4.05 THK X 838.2	2	6.05

This drawing is our property. It can't be reproduced or communicated without our written agreement.		APL APOLLO TUBES LTD. 	
DRAWN BY SB		DATE 30MAR2020	
CHECKED BY P2P Analysis & Solutions		DATE 30MAR2020	
DESIGNED BY P2P Analysis & Solutions		DATE 30MAR2020	
DRAWING TITLE PAGE 135		SIZE A0	DRAWING NUMBER P2P HANDRAIL 000135
SCALE As Indicated		WEIGHT (kg) 0kg	REV 00

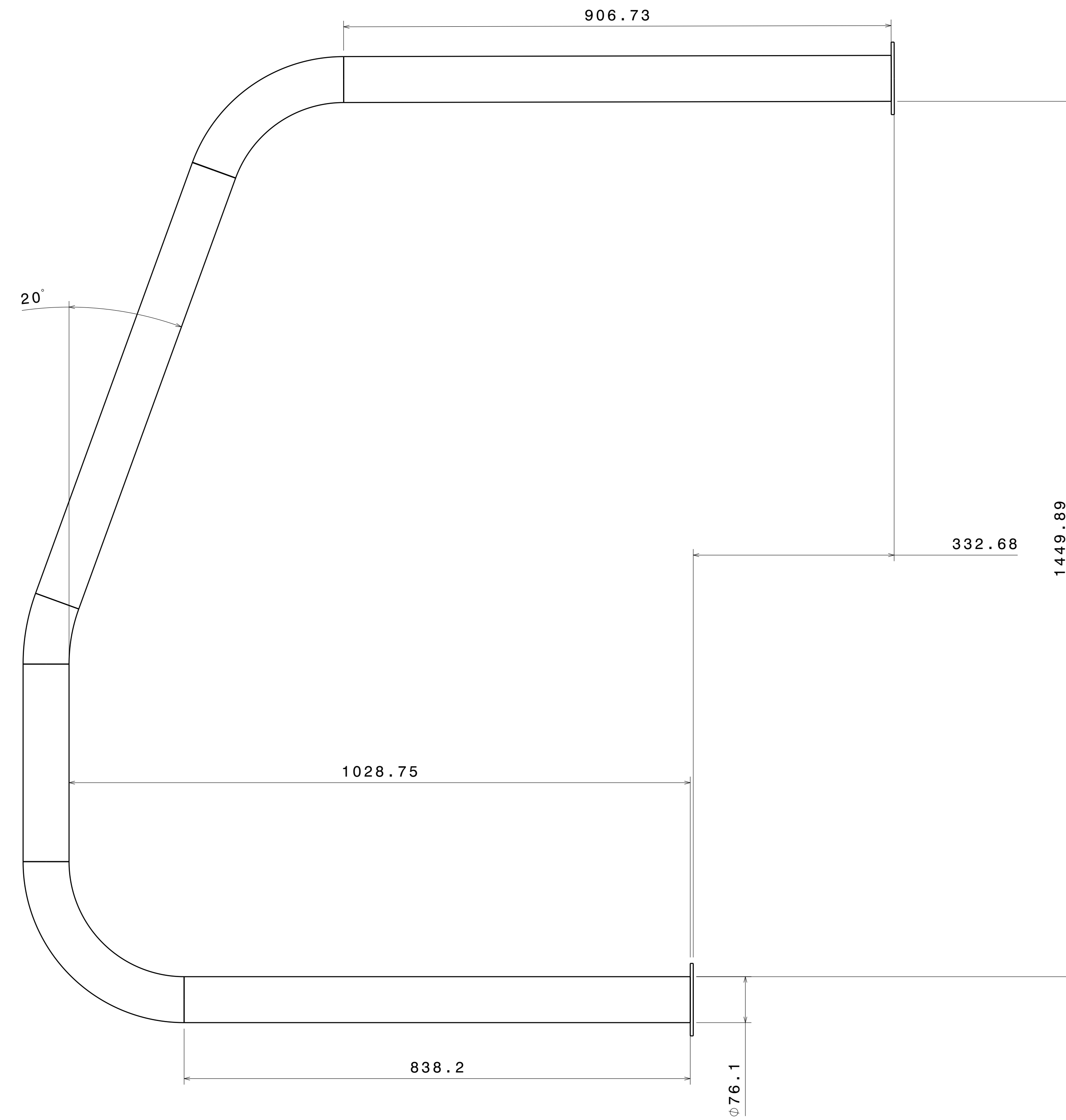
UNLESS OTHERWISE SPECIFIED DIMENSION ARE IN MM
VIEWS: THIRD ANGLE PROJECTION



REV	DATE	DESCRIPTION
00	30MAR2020	INITIAL REVISION

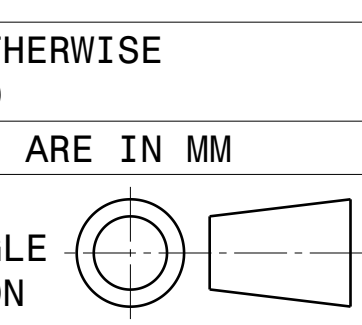


Front view
Scale: 1:5




Right view
Scale: 1:5

UNLESS OTHERWISE SPECIFIED DIMENSION ARE IN MM
VIEWS: THIRD ANGLE PROJECTION

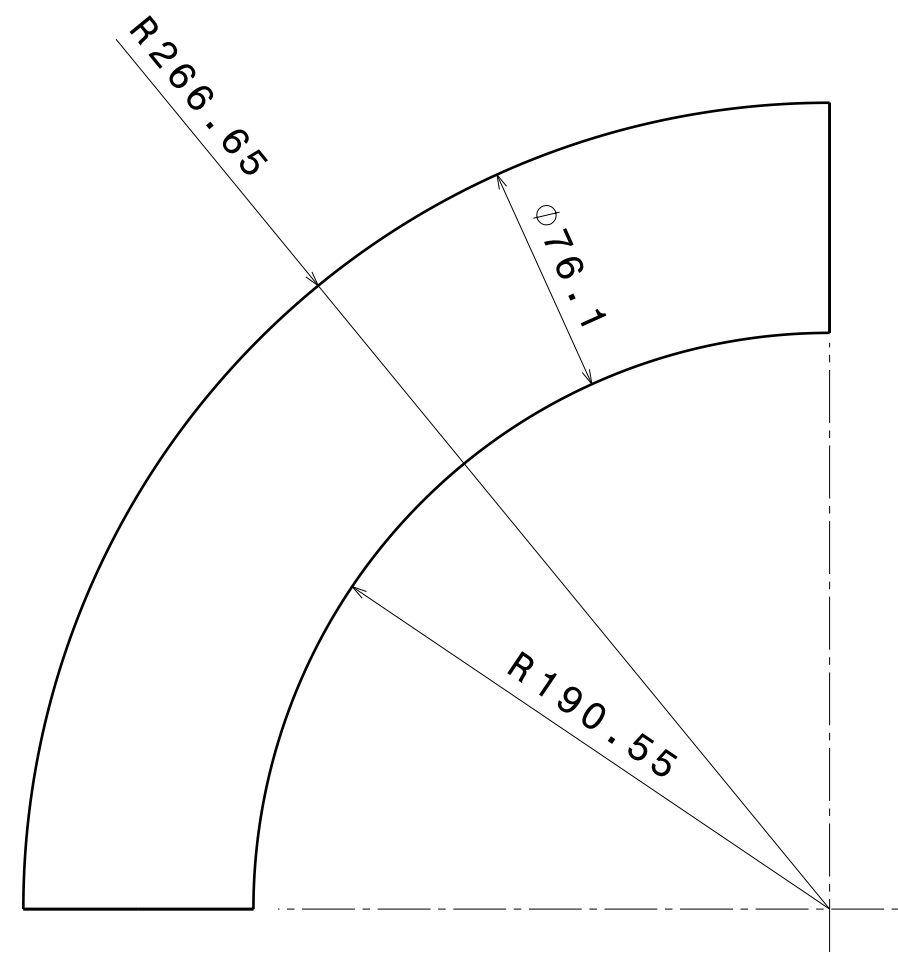


This drawing is our property. It can't be reproduced or communicated without our written agreement.

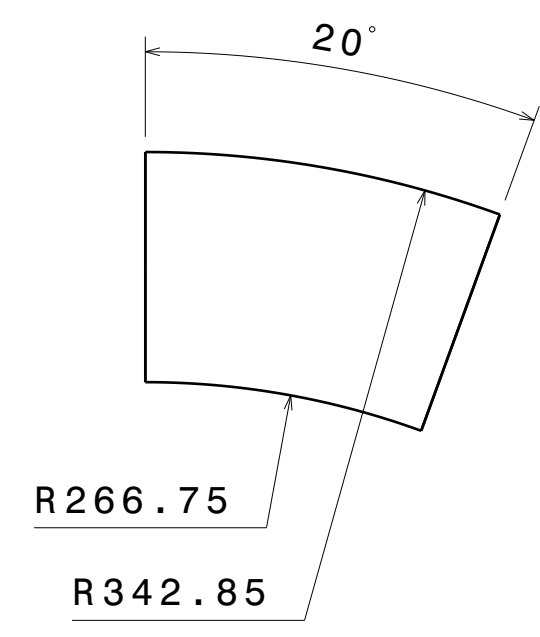
DRAWN BY	DATE
SB	30MAR2020
CHECKED BY	DATE
P2P Analysis & Solutions	30MAR2020
DESIGNED BY	DATE
P2P Analysis & Solutions	30MAR2020

APL APOLLO TUBES LTD. 	
DRAWING TITLE	
PAGE 135	
SIZE	DRAWING NUMBER
A0	P2P HANDRAIL 000135
SCALE	WEIGHT (kg)
NONE	XXX
REV	SHEET 2 OF 5
00	

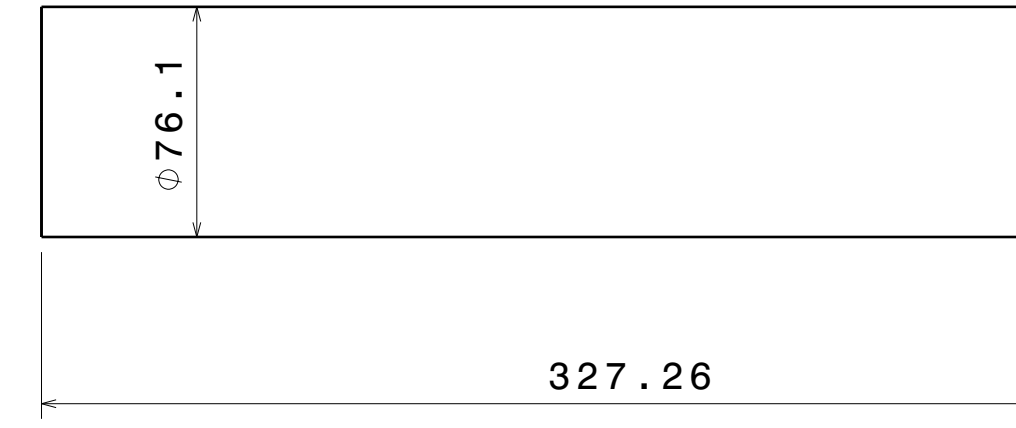
REV	DATE	DESCRIPTION
00	30MAR2020	INITIAL REVISION



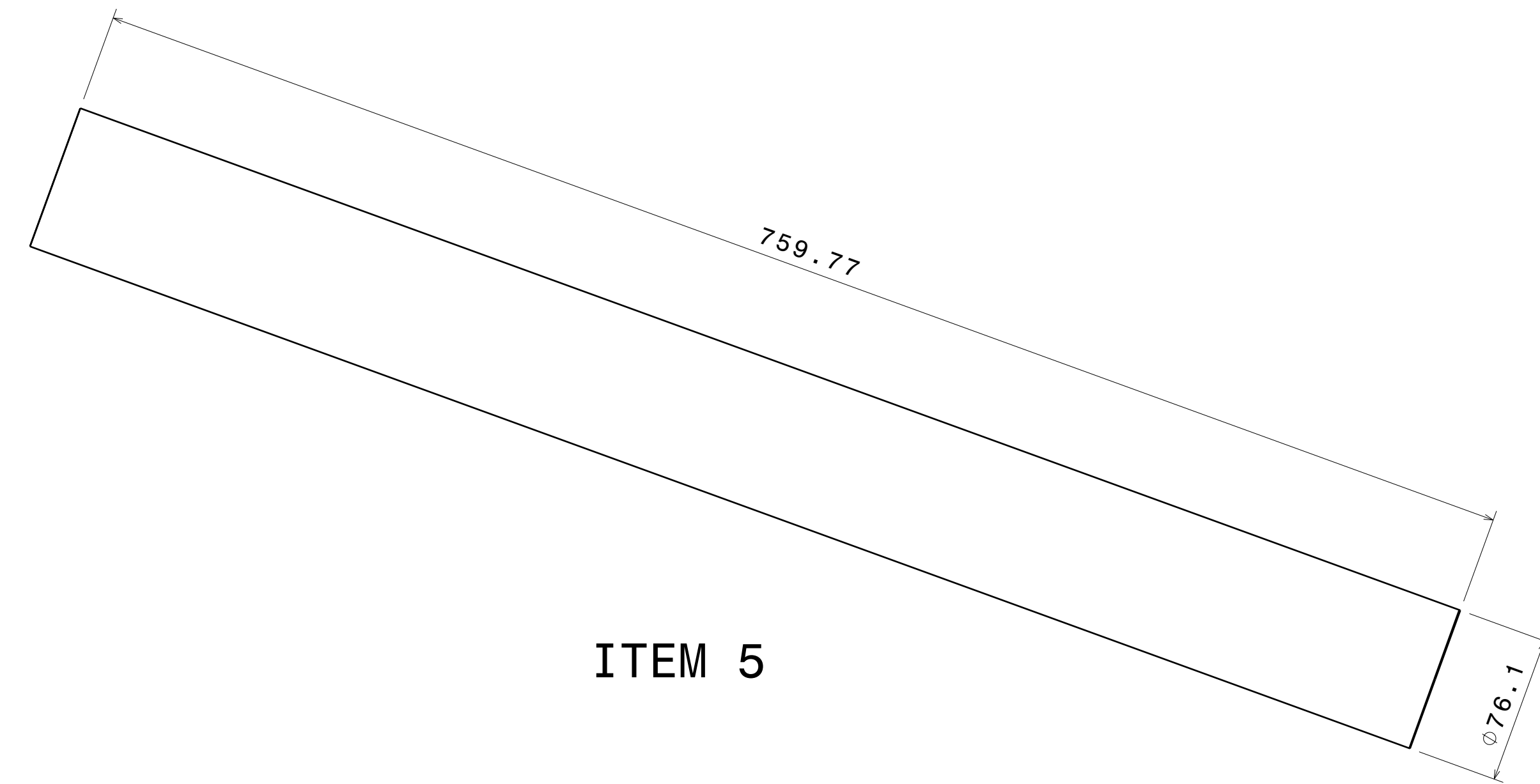
ITEM 2



ITEM 4



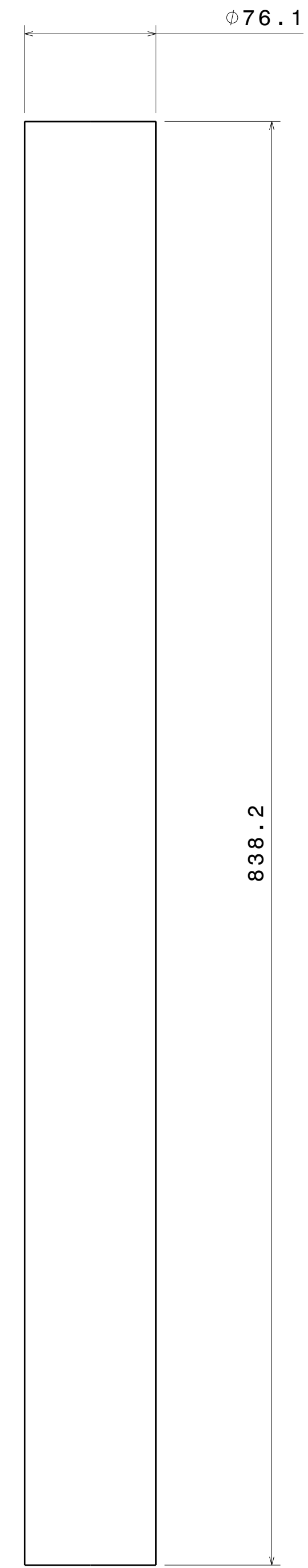
ITEM 3



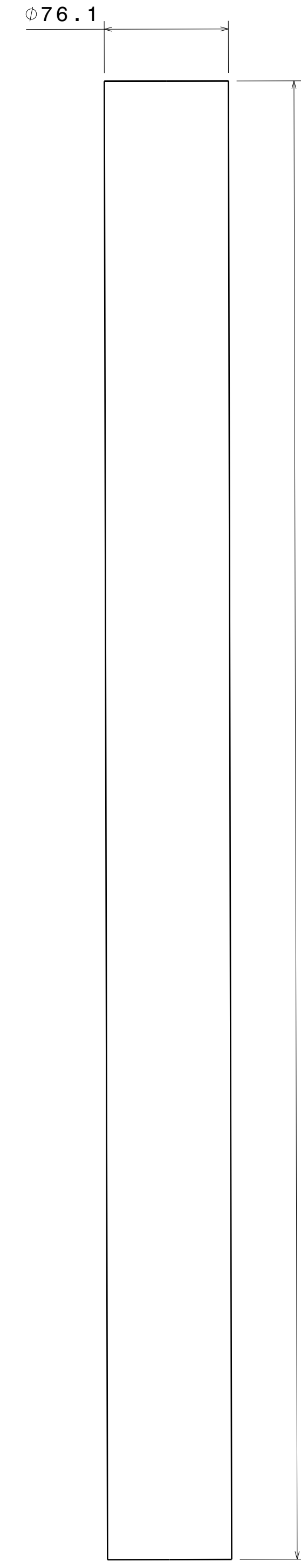
ITEM 5



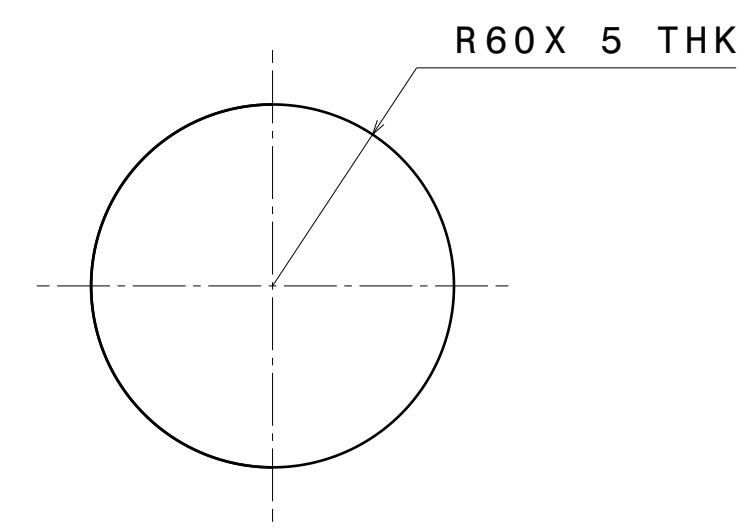
ITEM 6



ITEM 1



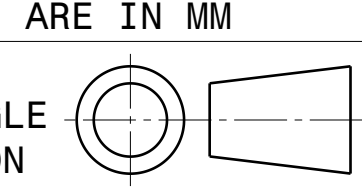
ITEM 7




ITEM 8

ALL COMPONENTS ARE OF 4.05 THK

UNLESS OTHERWISE SPECIFIED DIMENSION ARE IN MM
 VIEWS: THIRD ANGLE PROJECTION



This drawing is our property. It can't be reproduced or communicated without our written agreement.		APL APOLLO TUBES LTD. 	
DRAWN BY SB		DRAWING TITLE PAGE 135	
CHECKED BY P2P Analysis & Solutions	DATE 30MAR2020	SIZE A0	DRAWING NUMBER P2P HANDRAIL_000135
DESIGNED BY P2P Analysis & Solutions	DATE 30MAR2020	SCALE NONE	WEIGHT (kg) XXX
		SHEET 3 OF 5	