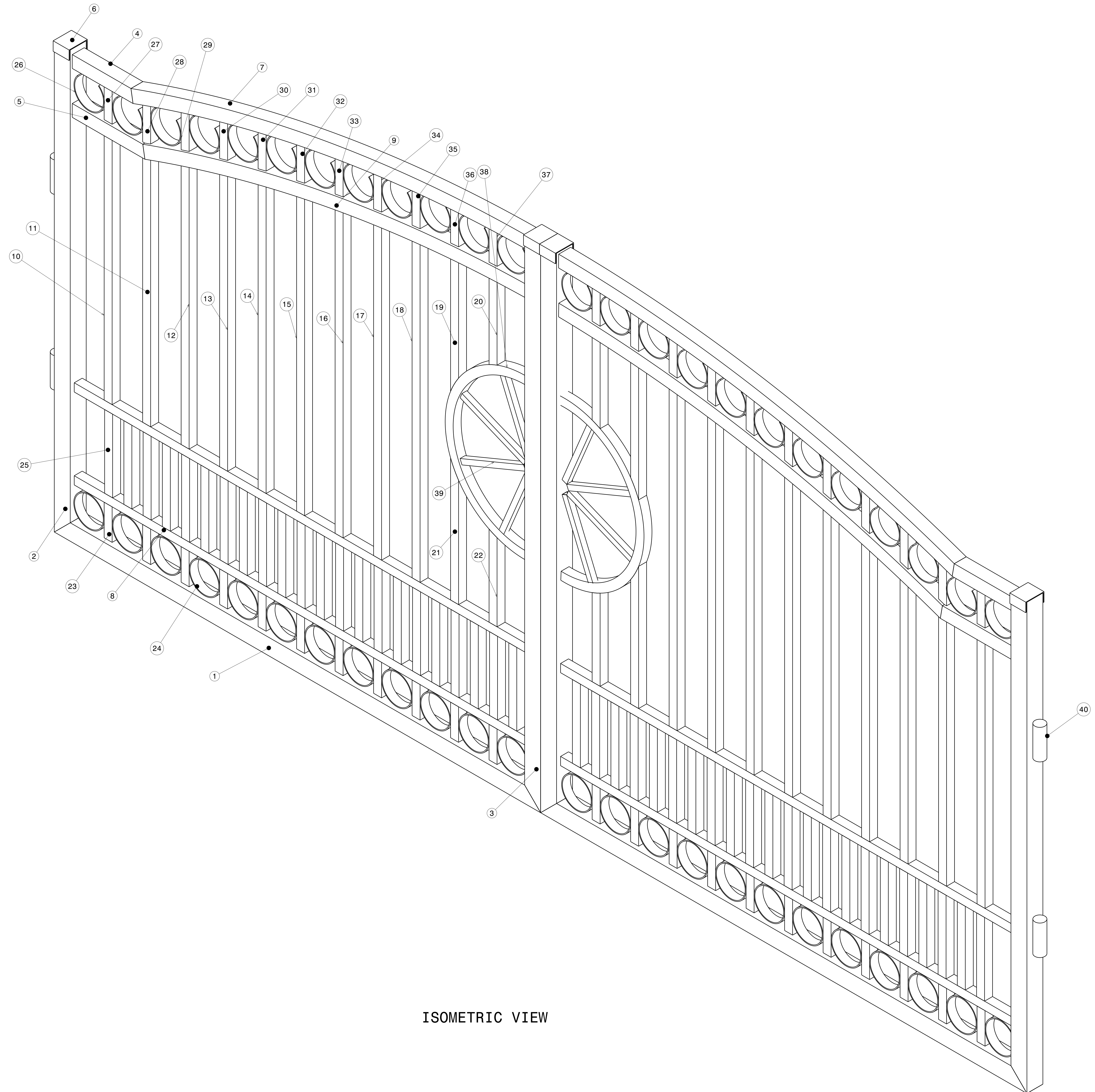


REV/DATE	DESCRIPTION
A / 2/26/2020	INITIAL REVISION



- NOTES:
- (⊥) ALL VERTICAL SUPPORTS ARE PERPENDICULAR.
  - FLATNESS OF .5MM IS APPLIED BY DEFAULT.
  - ⊥ WELD BEAD OF 2MM RADIUS IS FOLLOWED.
  - ▽ SURFACE FINISH MEDIUM TO SMOOTH IS USED.
  - ALL TUBES ARE AS PER APL APOLLO STANDARD. CHANGES MAY EFFECT THE LOAD CAPACITY.
  - DUAL DIMENSIONS USED WITH BOTH METRIC AND INCH SYSTEM.
  - ALL HORIZONTAL AND VERTICAL TUBES ARE PERPENDICULAR TO EACH OTHER WITH ±1 DEG.
  - FINE WELDING IS REQUIRED AS PER MENTIONED DETAILS AND FINISHING.
  - HIGHER CURRENT WELDING MAY AFFECT THE BRITTLENESS OF MATERIAL WHICH LATER MAY RAISE TO WEAKENING OF STRUCTURE.

ISOMETRIC VIEW

ITEM NO.	PART DESCRIPTION	DESCRIPTION	QUANTITY
40	HINGE		1
39	Square Tube 22 Medium 34	SEE DETAILS	8
38	Square tube 22 Circular Frame 2	SEE DETAILS	2
37	Square Tube 23 Medium 24	SEE DETAILS	2
36	Square Tube 23 Medium 23	SEE DETAILS	2
35	Square Tube 23 Medium 22	SEE DETAILS	2
34	Square Tube 23 Medium 21	SEE DETAILS	2
33	Square Tube 23 Medium 20	SEE DETAILS	2
32	Square Tube 23 Medium 19	SEE DETAILS	2
31	Square Tube 23 Medium 18	SEE DETAILS	2
30	Square Tube 23 Medium 17	SEE DETAILS	2
29	Square Tube 23 Medium 16	SEE DETAILS	2
28	Square Tube 23 Medium 15	SEE DETAILS	2
27	Square Tube 23 Medium 14	SEE DETAILS	2
26	Round Tube 2	SEE DETAILS	24
25	Square Tube 23 Frame 9	40 X 40 X 2.6 X 363.76	44
24	Round Tube 1	SEE DETAILS	24
23	Square Tube 23 Frame 8	40 X 40 X 2.6 X 154.4	22
22	Square Tube 23 Medium 13	SEE DETAILS	2
21	Square Tube 23 Medium 12	SEE DETAILS	2
20	Square Tube 23 Medium 11	SEE DETAILS	2
19	Square Tube 23 Medium 10	SEE DETAILS	2
18	Square Tube 23 Medium 9	SEE DETAILS	2
17	Square Tube 23 Medium 8	SEE DETAILS	2
16	Square Tube 23 Medium 7	SEE DETAILS	2
15	Square Tube 23 Medium 6	SEE DETAILS	2
14	Square Tube 23 Medium 5	SEE DETAILS	2
13	Square Tube 23 Medium 4	SEE DETAILS	2
12	Square Tube 23 Medium 3	SEE DETAILS	2
11	Square Tube 22 Medium 2	SEE DETAILS	2
10	Square Tube 23 Medium 1	SEE DETAILS	2
9	Square Tube 23 Curved 1	SEE DETAILS	2
8	Square Tube 23 Frame 7	40 X 40 X 2.6 X 2278.4	4
7	Square Tube 23 Curved 1	SEE DETAILS	2
6	Square Tube 23 Frame 6	SEE DETAILS	2
5	Square Tube 23 Frame 5	60 X 60 X 2.6 X 364.25	2
4	Square Tube 23 Frame 4	60 X 60 X 2.6 X 304.8	2
3	Square Tube 23 Frame 3	80 X 80 X 4.8 X 2470	2
2	Square Tube 23 Frame 2	80 X 80 X 4.8 X 2133.6	2
1	Square Tube 23 Frame 1	80 X 80 X 4.8 X 2438.4	2

This drawing is our property. It can't be reproduced or communicated without our written agreement.

**APL APOLLO TUBES LTD.**

DRAWING TITLE: **GATE 23**

DRAWN BY: SB DATE: 2/26/2020

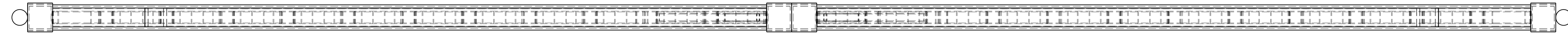
CHECKED BY: P2P Analysis & Solutions DATE: 2/26/2020

DESIGNED BY: P2P Analysis & Solutions DATE: 2/26/2020

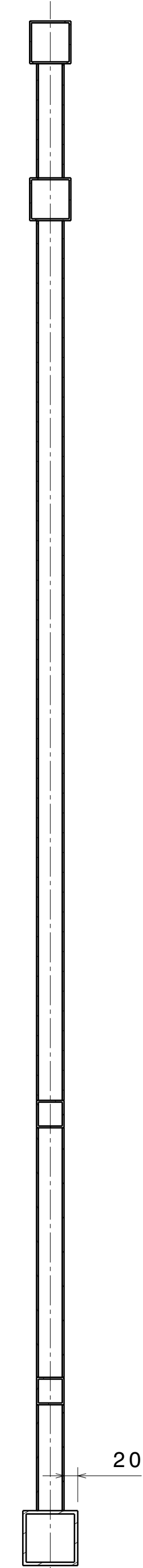
UNLESS OTHERWISE SPECIFIED DIMENSION ARE IN MM VIEWS: THIRD ANGLE PROJECTION

SIZE	DRAWING NUMBER	REV
A0	P2P APL 00023	00
SCALE	NONE	WEIGHT (kg) 400
		SHEET 1

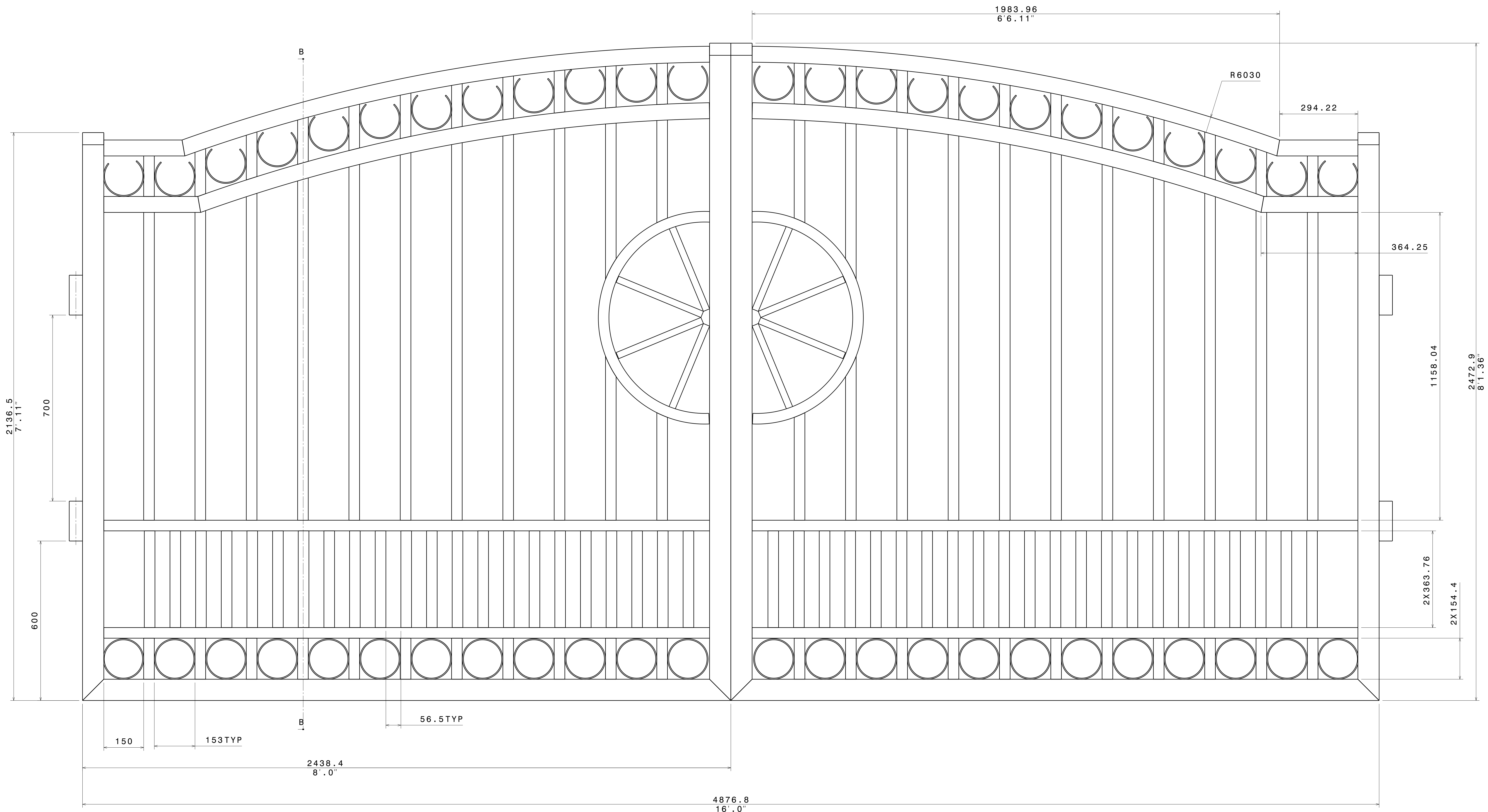
REV	DATE	DESCRIPTION
00	2/26/2020	INITIAL REVISION




Top view  
Scale: 4:25



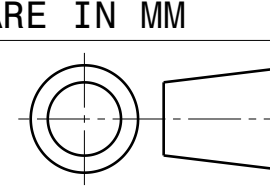
Section cut B-B  
Scale: 4:25



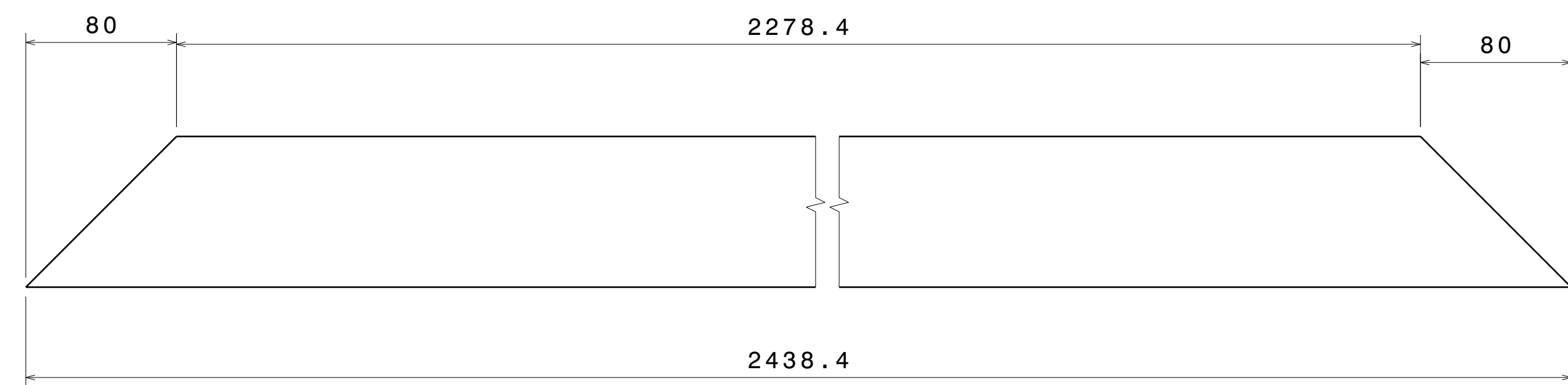
Front view  
Scale: 4:25

This drawing is our property. It can't be reproduced or communicated without our written agreement.		APL APOLLO TUBES LTD. 	
DRAWN BY SB		DATE 2/26/2020	
CHECKED BY P2P Analysis & Solutions		DATE 2/26/2020	
DESIGNED BY P2P Analysis & Solutions		DATE 2/26/2020	
DRAWING TITLE GATE 23		SIZE A0	DRAWING NUMBER P2P APL 00023
SCALE NONE		WEIGHT (kg) XXX	REV 00
SHEET 2		SHEET 2	

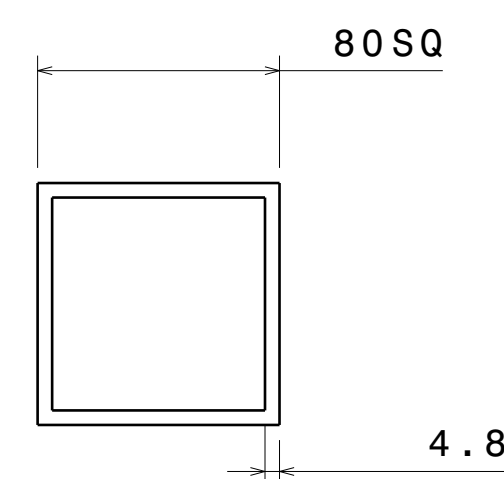
UNLESS OTHERWISE SPECIFIED DIMENSION ARE IN MM  
VIEWS: THIRD ANGLE PROJECTION



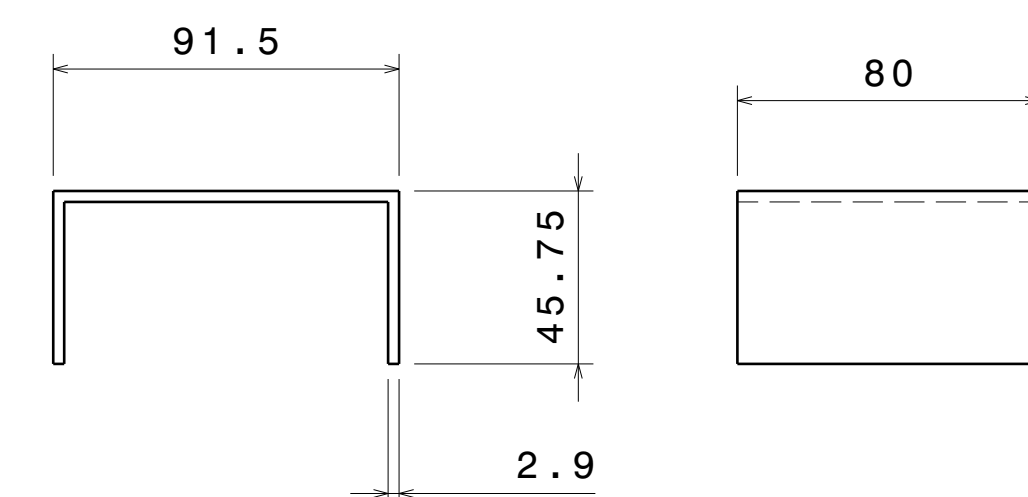
REV	DATE	DESCRIPTION
00	2/26/2020	INITIAL REVISION



ITEM 1

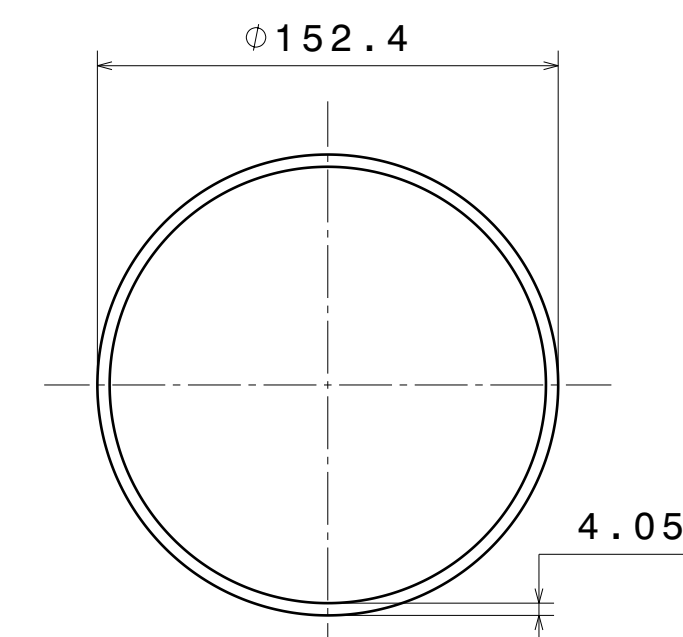


Right view  
Scale: 2:5

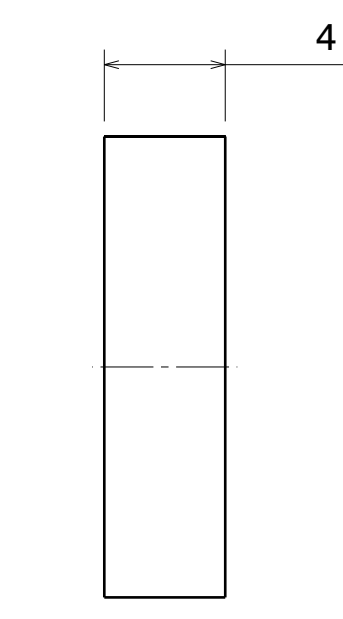


Right view  
Scale: 1:2

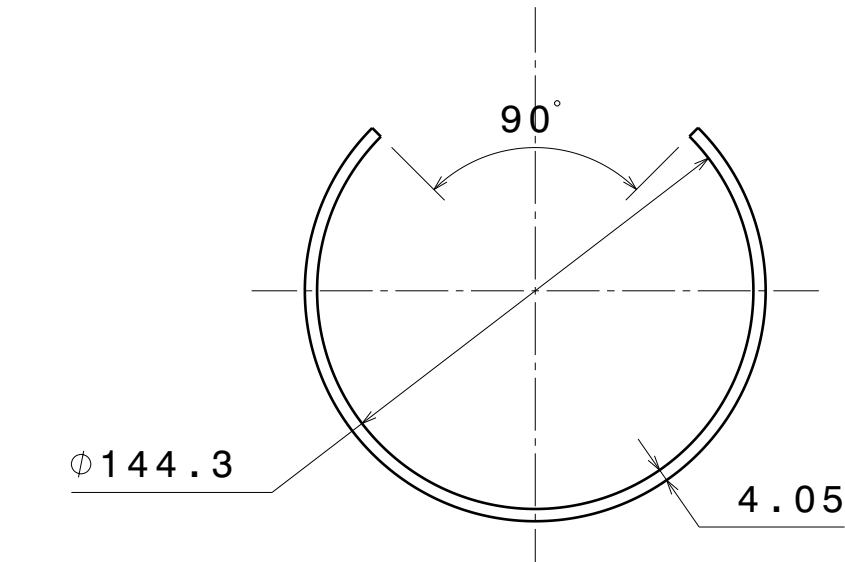
ITEM 6 IS HALF OF SQUARE  
CROSS SECTION  
91.5 X 91.5 X 2.9.  
SQUARE CROSS TO BE  
SPLITTED AT MIDDLE ON ANY SIDE



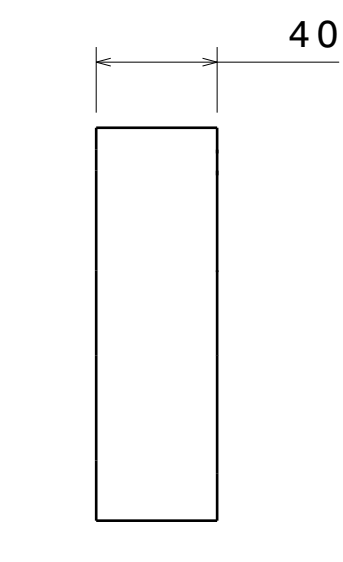
ITEM 24



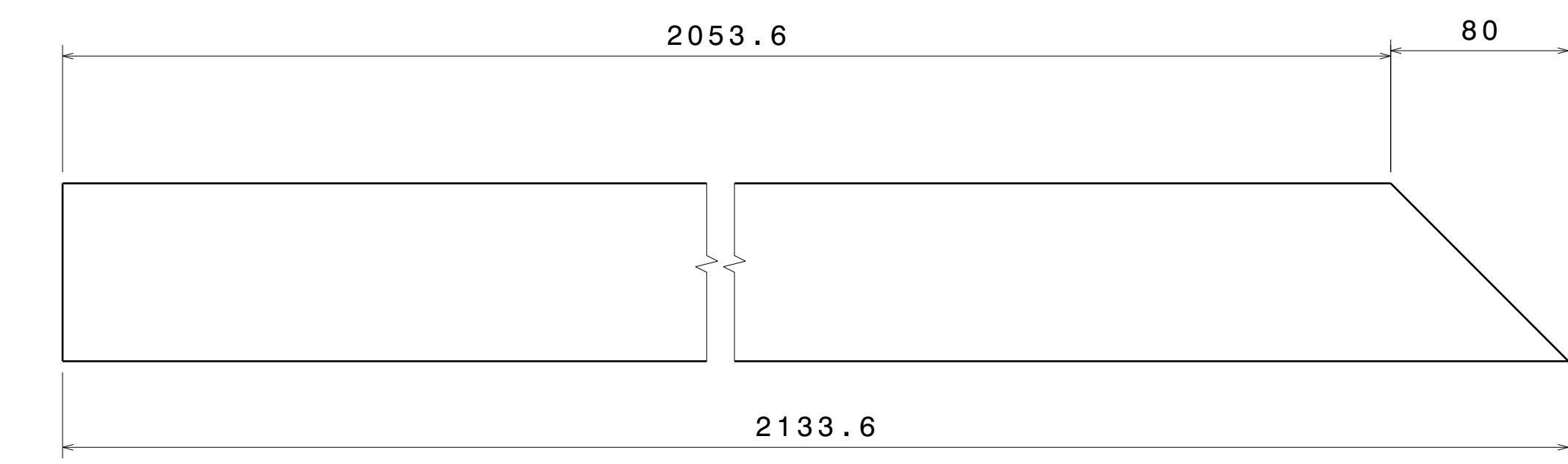
Right view  
Scale: 2:5



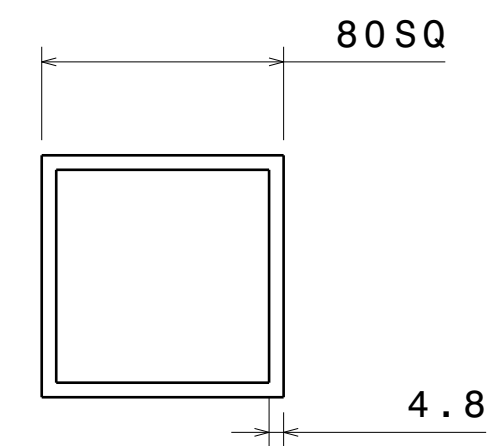
ITEM 26



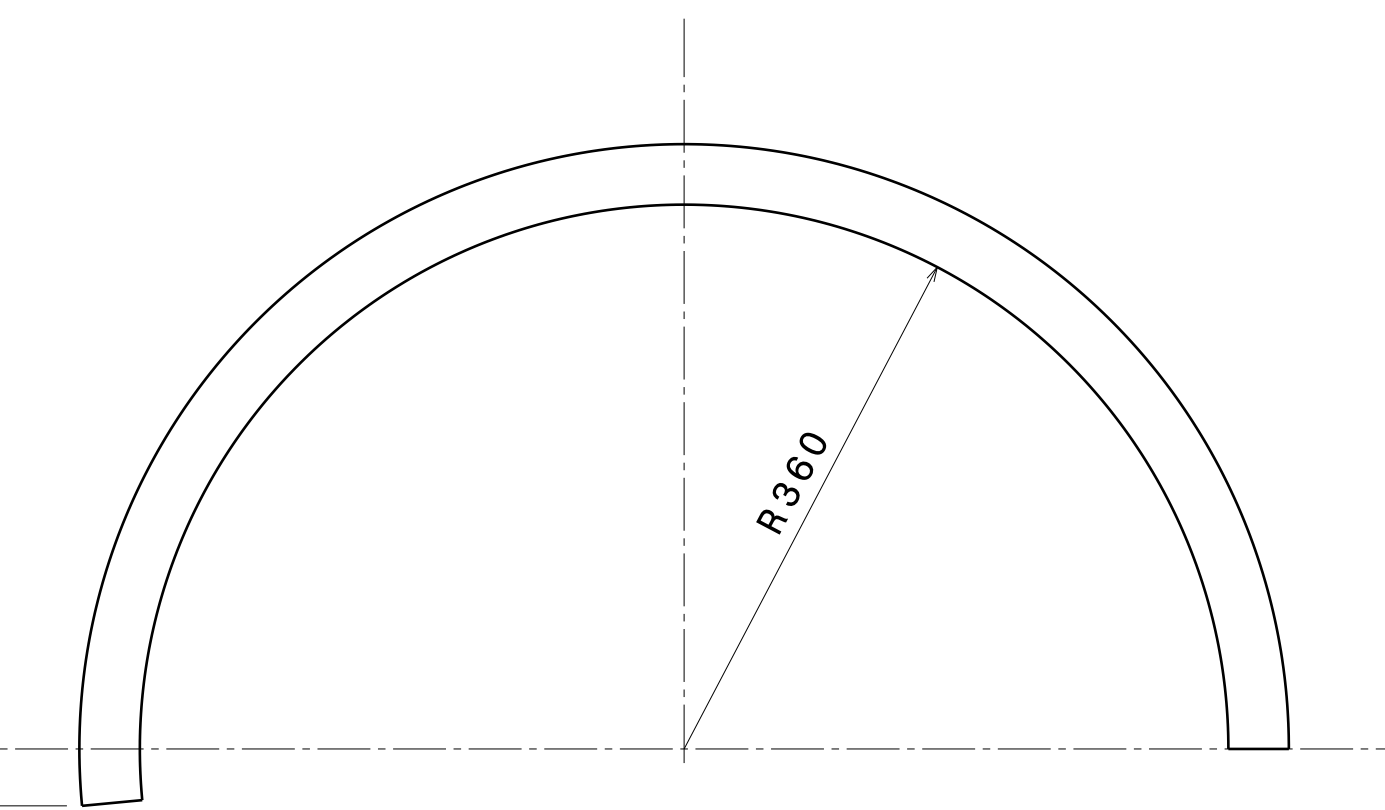
Right view  
Scale: 2:5



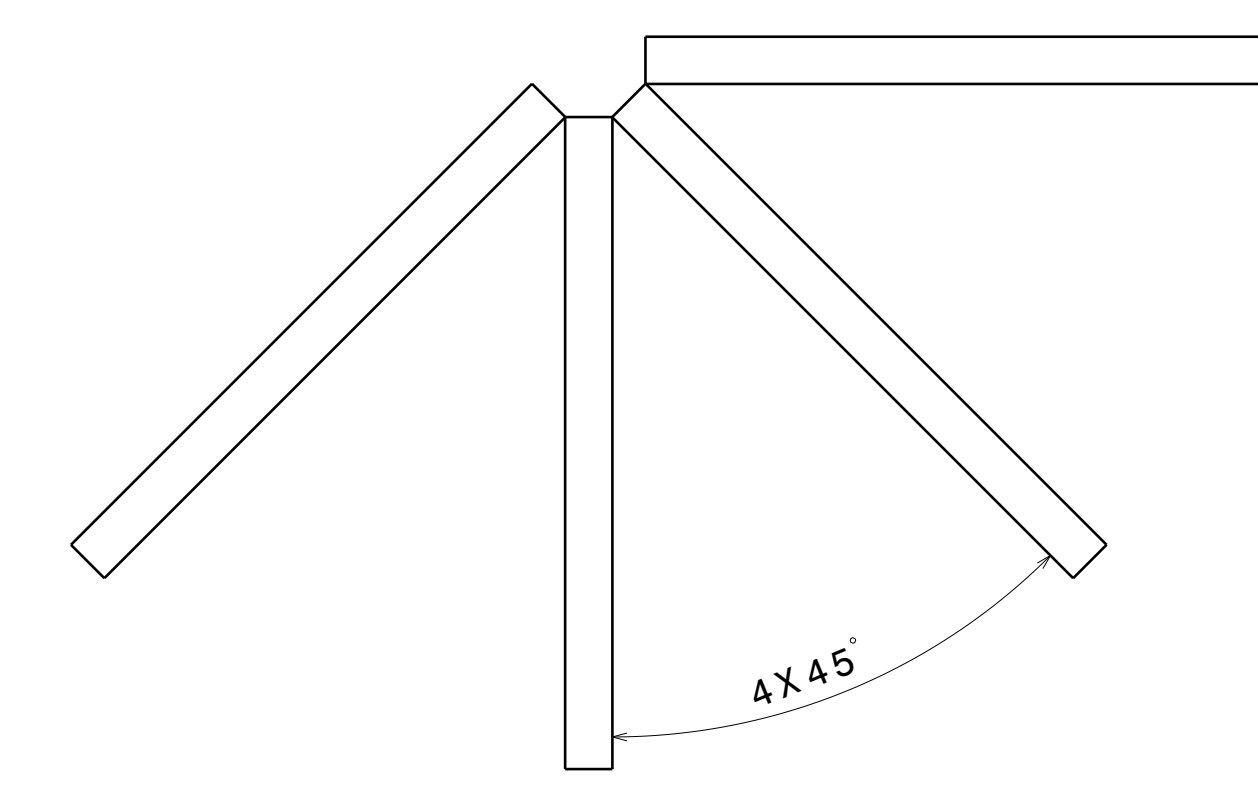
ITEM 2



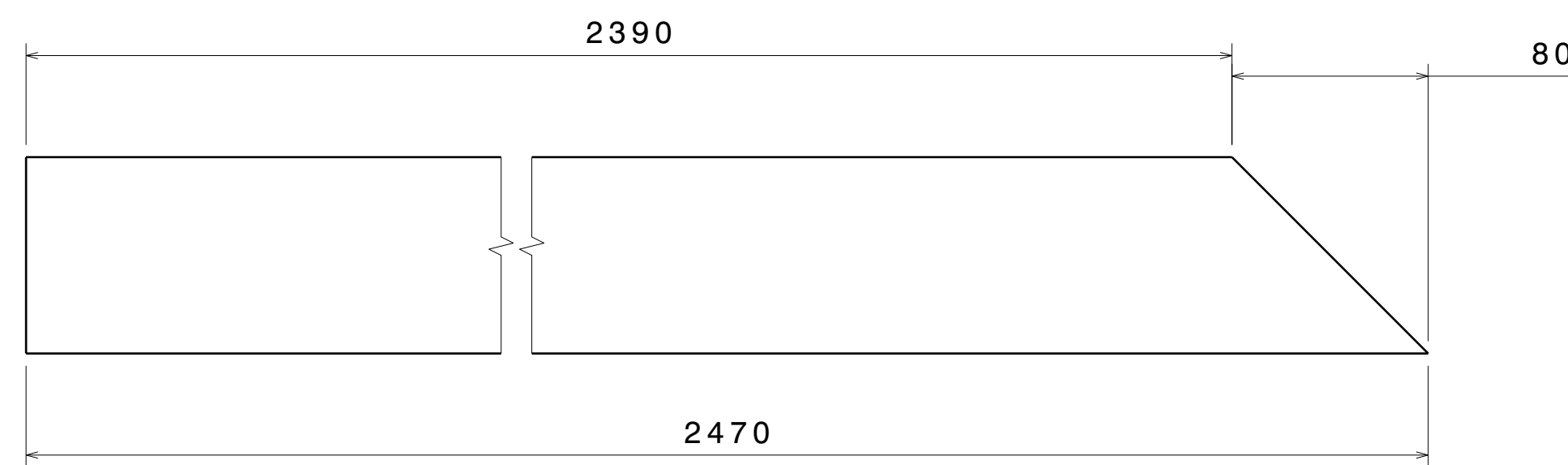
Right view  
Scale: 2:5



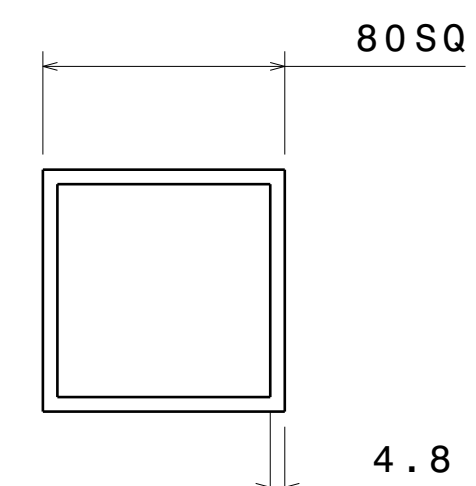
ITEM 38  
CROSS SECTION: 40 X 40 X 1.6



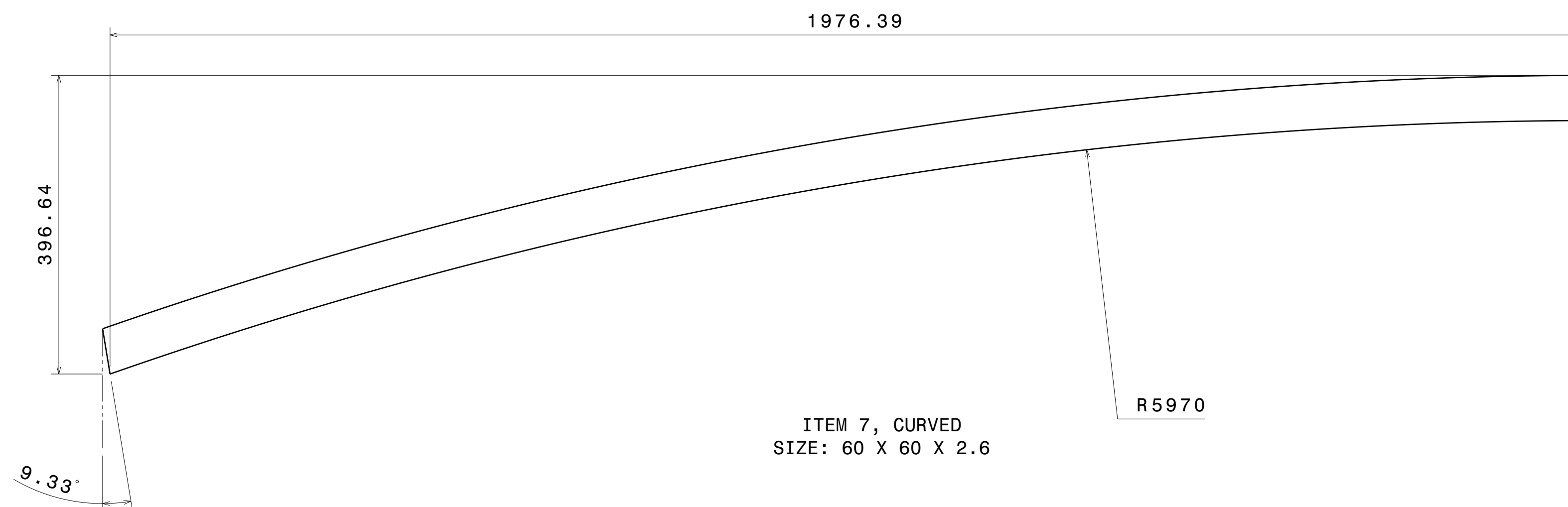
ITEM 39, QTY 8, WELDED TOGETHER AS AS SHOWN  
SIZE: 25 X 25 X 1.6 X 345



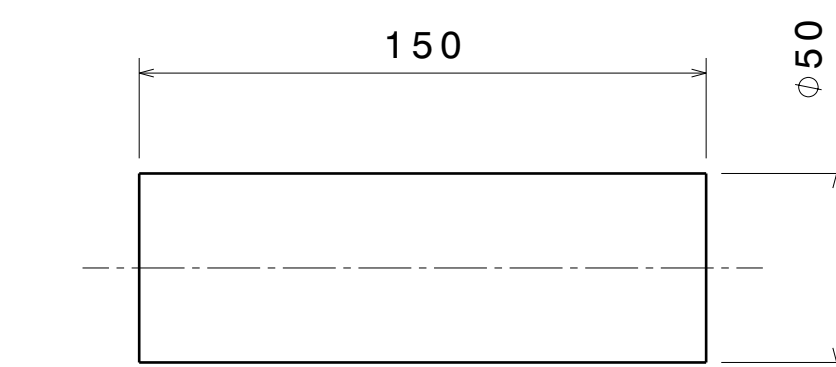
ITEM 3



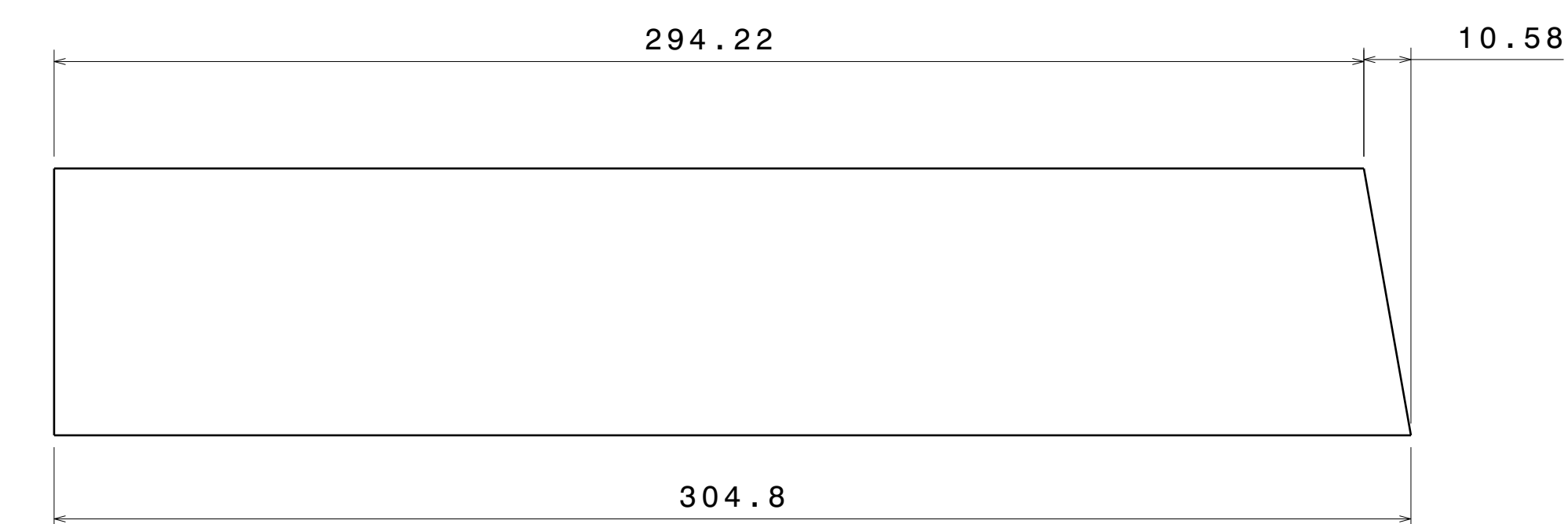
Right view  
Scale: 2:5



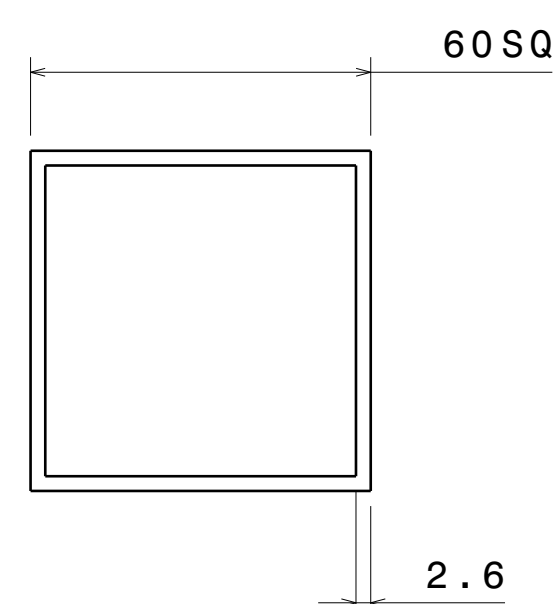
ITEM 7, CURVED  
SIZE: 60 X 60 X 2.6



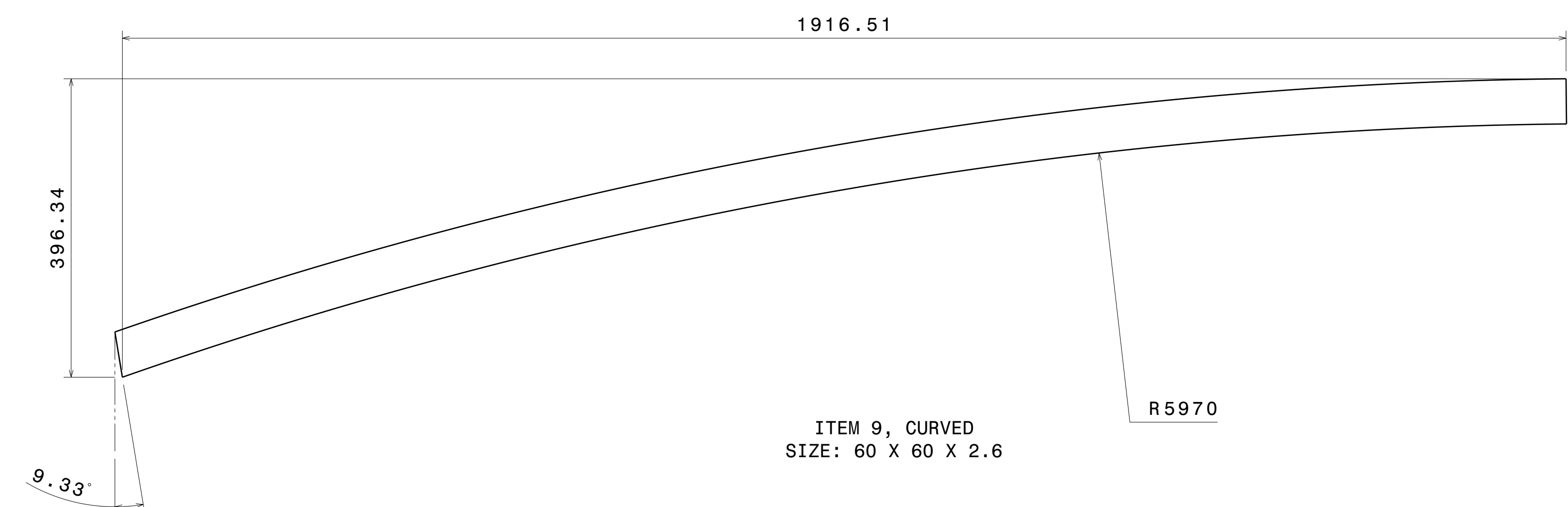
ITEM 40



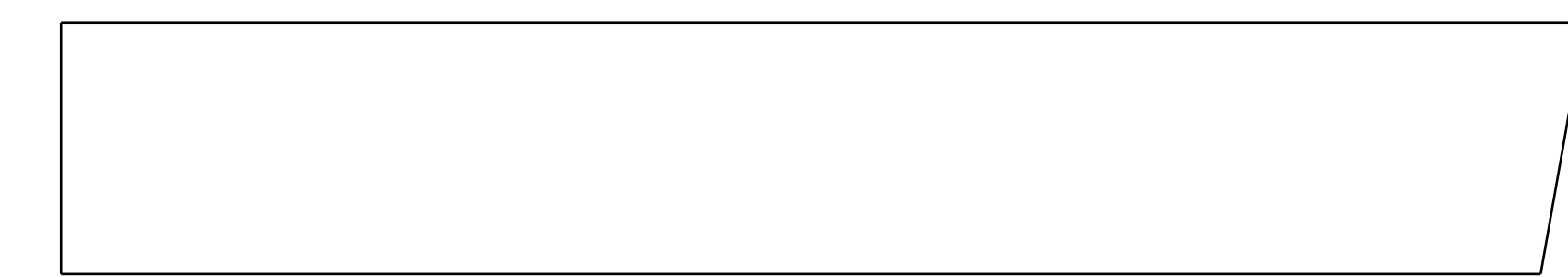
ITEM 4



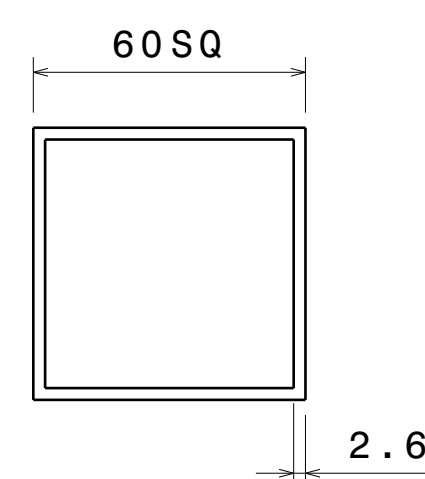
Right view  
Scale: 3:4



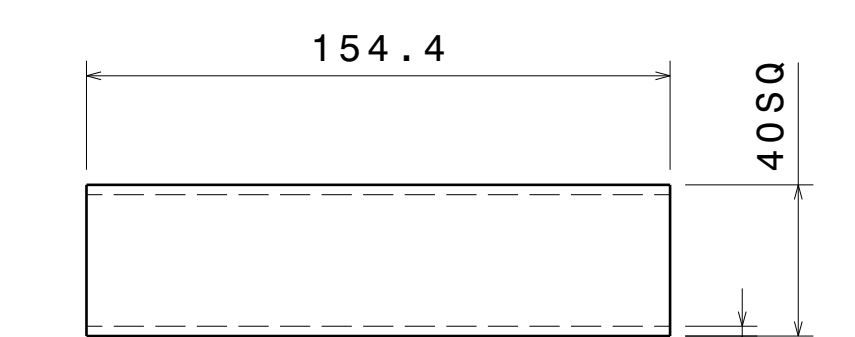
ITEM 9, CURVED  
SIZE: 60 X 60 X 2.6



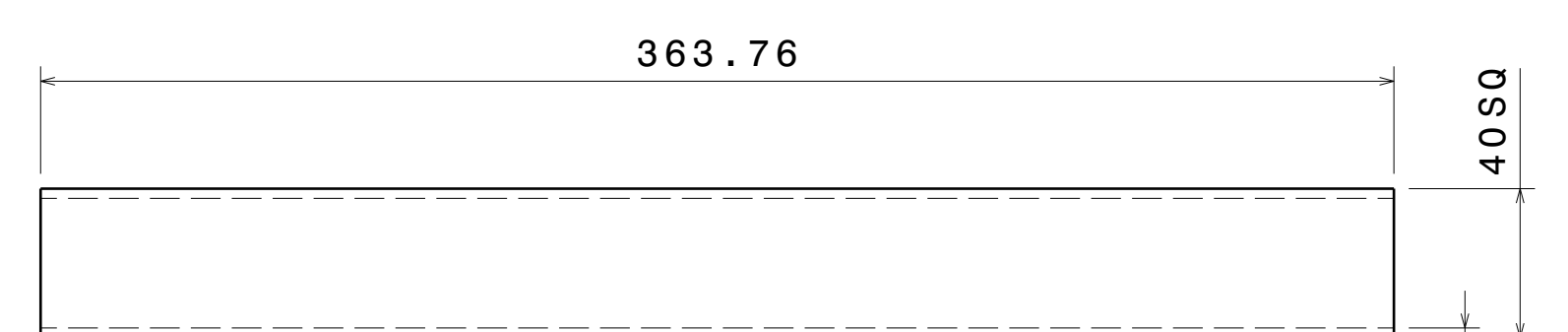
ITEM 5



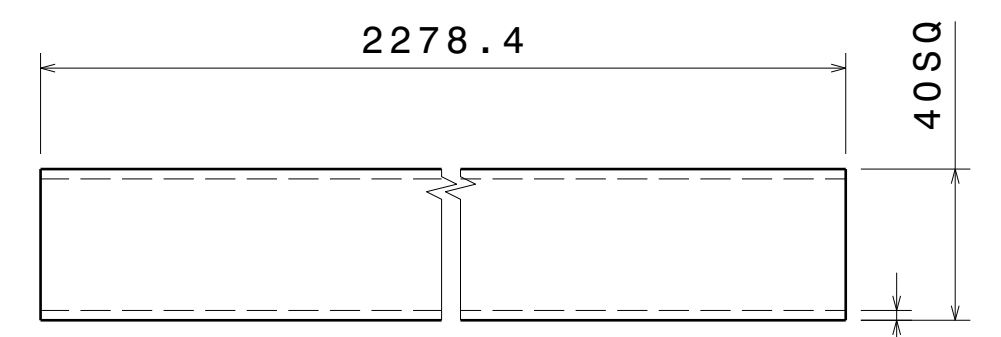
Right view  
Scale: 3:5



ITEM 23



ITEM 25



ITEM 8

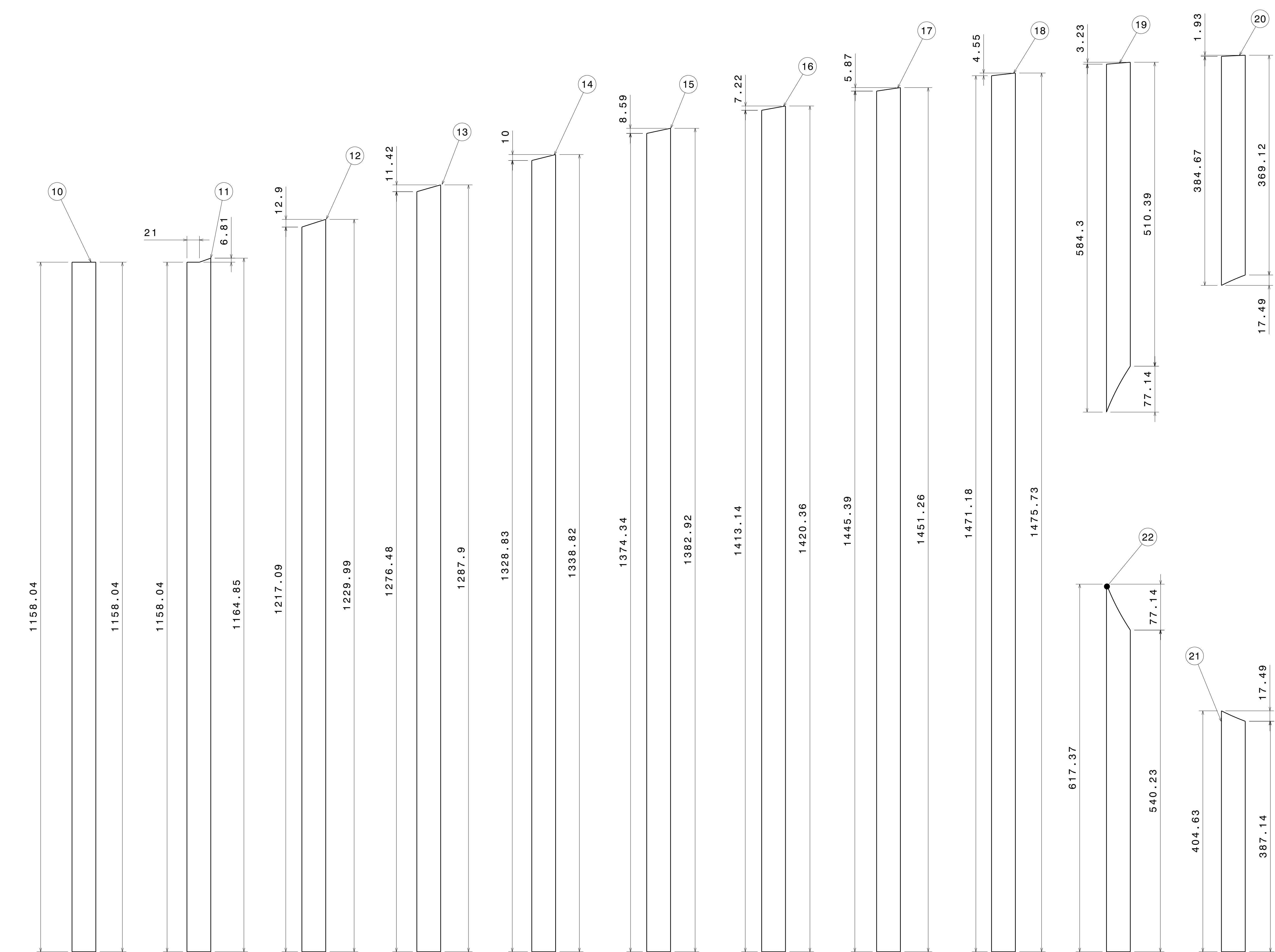
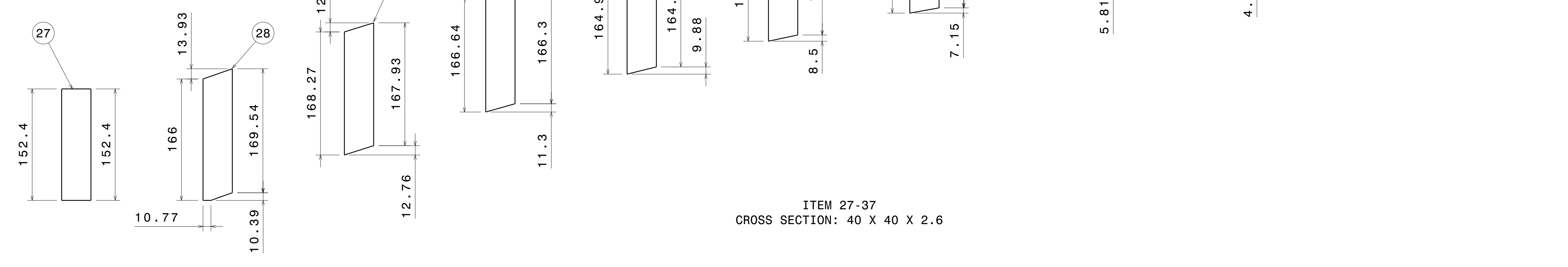
UNLESS OTHERWISE SPECIFIED  
DIMENSION ARE IN MM  
VIEWS:  
THIRD ANGLE PROJECTION


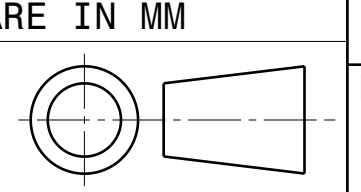
This drawing is our property.  
It can't be reproduced  
or communicated without  
our written agreement.

DRAWN BY	DATE
SB	2/26/2020
CHECKED BY	DATE
P2P Analysis & Solutions	2/26/2020
DESIGNED BY	DATE
P2P Analysis & Solutions	2/26/2020

APL APOLLO TUBES LTD.	
DRAWING TITLE	
GATE 23	
SIZE	DRAWING NUMBER
A0	P2P APL_00023
SCALE	WEIGHT (kg)
NONE	XXX
SHEET	3

REV	DATE	DESCRIPTION
00	2/26/2020	INITIAL REVISION



This drawing is our property. It can't be reproduced or communicated without our written agreement.		APL APOLLO TUBES LTD. 	
DRAWN BY SB		DRAWING TITLE GATE 23	
CHECKED BY P2P Analysis & Solutions	DATE 2/26/2020	SIZE A0	DRAWING NUMBER P2P APL_00023
DESIGNED BY P2P Analysis & Solutions	DATE 2/26/2020	SCALE NONE	WEIGHT (kg) XXX
UNLESS OTHERWISE SPECIFIED DIMENSION ARE IN MM		REV 00	
VIEWS: THIRD ANGLE PROJECTION 		SHEET 4	